

Market Analysis & Forecast - Technical Report

Report Generated on: 2017-09-02 based on data: 2017-09-01

iShares PHLX Semiconductor ETF

ISIN: US4642875235 Currency: USD

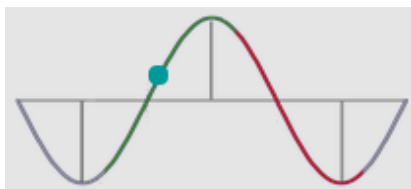
Medium Term Analysis

8 months Daily Price Chart - Investment perspective 1-6 weeks

ISHARES PHLX SEMICONDUCTOR ETF(SOXX.O) 218ms 01-Sep-2017 Friday
 Prev Close: 151.25 O: 151.52 H: 152.70 L: 151.52 C: 151.91 V: 530371 Chg: 0.66(+0.44 %)



On the current date **iShares PHLX Semiconductor ETF** Position is **Long - Buy** in the Medium term daily chart. Bullish phase is advancing, a short term positive price move is expected:



The chart on the right side shows the daily price performance in the last 8 months of **iShares PHLX Semiconductor ETF** versus (Blue line) in a Medium Term Daily.

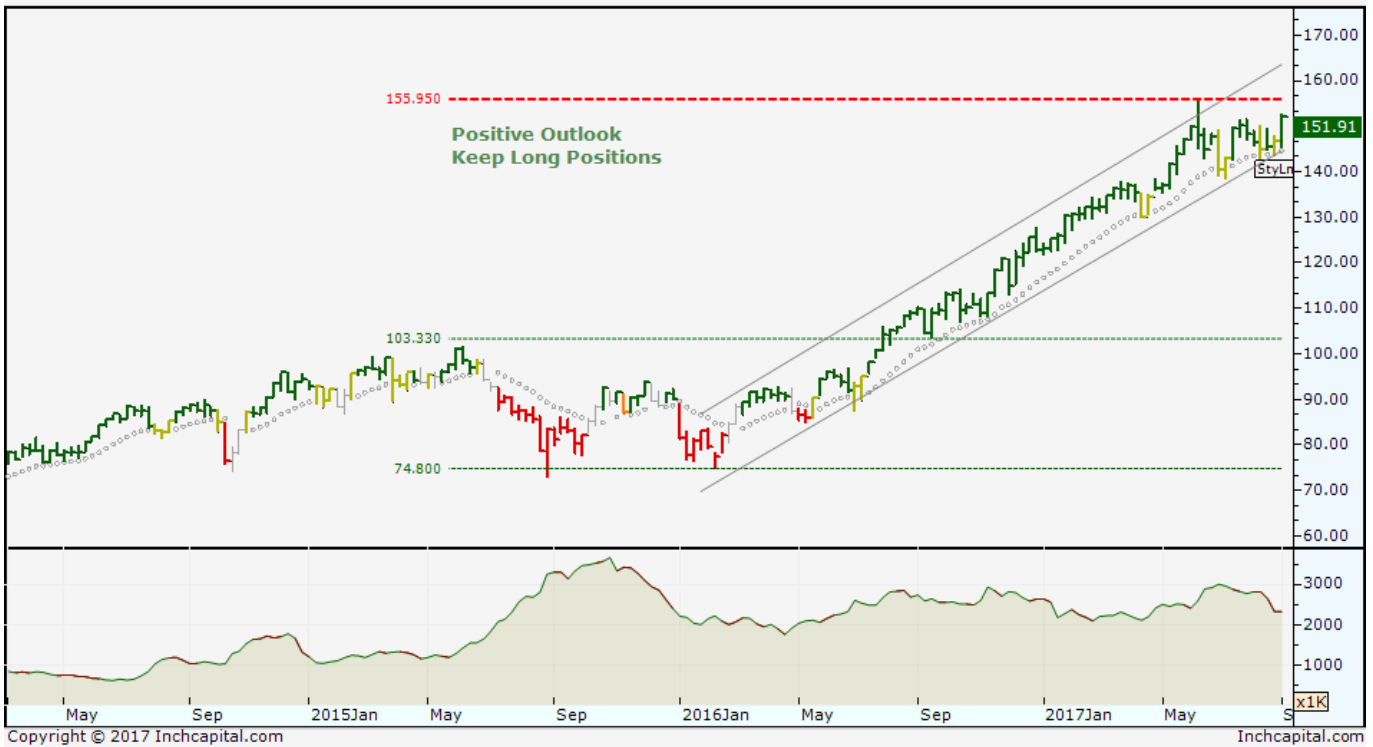


Long Term Analysis

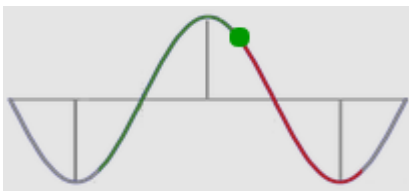
3.5 Years Weekly Price Chart - Investment perspective 1-6 Months

ISHARES PHLX SEMICONDUCTOR ETF(SOXX.O) 156ms

01-Sep-2017 Friday



On the current date **iShares PHLX Semiconductor ETF** Position is **Long - Buy** in the Long term weekly chart. Possible begin of a bearish phase only if a reversal happen:

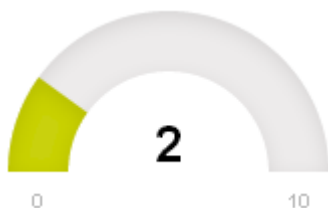


The chart on the right side shows the performance of **iShares PHLX Semiconductor ETF** versus (Blue line) in a Long Term Weekly.

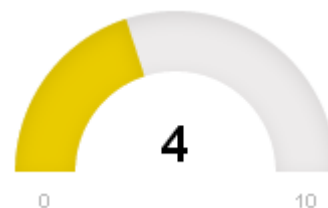


Risks

Asset *Volatility Risk* is **Very Low** and *Liquidity Risk* is **Medium - Low** :



Volatility Risk:



Liquidity Risk:

Medium Term Alternatives

Stocks with the same position of iShares PHLX Semiconductor ETF in the :

| Name | Liquidity Risk | Volatility Risk |
|--|----------------|-----------------|
| Direxion Daily FTSE China Bull 3x Shares | Medium | Medium - Low |
| Direxion Daily FTSE China Bull 3x Shares | Medium | Medium - Low |
| Direxion Daily Emerging Markets Bull 3X Shares | Medium | Medium - Low |
| Direxion Daily Emerging Markets Bull 3X Shares | Medium | Medium - Low |

For more information, comparison with other stocks and iShares PHLX Semiconductor ETF ranking in ETF and all the world visit www.InchCapital.com

Report Reading Guide

Medium and Long Term Chart Analysis "Updated on" or "Update" is the latest date and price considered for the analysis.

Where recommendation are mentioned in the report, "Medium Term" denotes the medium-term trend (1 - 6 weeks outlook). "Long Term" denotes the long-term trend (1 - 6 month outlook).

Rating is given inside the chart image by a short text comment that explain the trend/momentum health.

Positive outlook (price likely to rise) are given by the **green color** of the price history completed by the label on the last bar of the chart: GoLng=Go Long | StyLng=Stay Long | RevLng= Reverse From Short to Long.

Neutral outlook (no big price changes expected) are given by the gray color of the price history completed by the label on the last bar of the chart: StyFlat = Stay Flat/Neutral | ExtLng=Exit Long | ExtSrt=Exit Short.

Negative outlook (price likely to fall) are given by the **red color** of the price history completed by the label on the last bar of the chart: GoShrt=Go Short | StyShrt=Stay Short | RevShrt= Reverse From Long to Short.

The horizontal red and green lines in the chart indicate support levels (green) and resistance levels (red). Orange and Violet Lines in the chart indicate dynamic support and resistance.

Parallel Gray Line show the most probable underlying price trend regression channel.

Trend Stage show the classifies the stock trend into phases: | begin | developing | end | of the bullish move and | begin | developing | end | of the bearish price move.

Volatility Risk shows the risk related to the normal price movements: if the volatility risk is high, you know that the stock has large daily and monthly movements. By holding such stocks, the value may fluctuate a lot in the short term.

Liquidity risk indicate how easy is executing a trade: if the liquidity risk is high, buying or selling such a stock, the value of your investment can fluctuate quite a lot especially if you are buying a large quantity, or are in a hurry to buy or sell.

Global Disclaimer / Important Information

This document has been developed and provided by Inchcapital.com.

In compliance with the provisions of Article 25 of Directive 2006/73/EC , Inchcapital.com ensures the effective implementation of all the measures set out in this rule in relation to financial analysts and other relevant persons involved in the preparation of investment research.

This document is disseminated for informational purposes only . The information, opinions , estimates and projections included in this document refer to the date specified therein, and are based on information obtained from sources considered reliable by Inchcapital.com. However, Inchcapital.com do not provide any warranty , express or implied, as to the accuracy, correctness or completeness of its contents.

This document does not constitute a commercial offer and/or contract , is not the basis of any contract or commitment whatsoever, nor should be considered as advice of any kind. In any case this document or its contents should be considered as an offer to buy or subscribe for securities or other instruments , or to undertake or divest investments. Any eventual investment decision by the recipient shall be made by the same independently and under its own responsibility , after taking into account their own investment objectives , financial position and risk profile , having previously sought , where appropriate, the expert advice you may need. Expressly advised, that the historical evolution of any securities , instruments or investments in any case do not guarantee future results or returns .

Inchcapital.com do not assume liability for any loss , direct or indirect, that may result from the use of this document , whose content may not be reproduced, distributed or published , in whole or in part, without the written consent Inchcapital.com.